

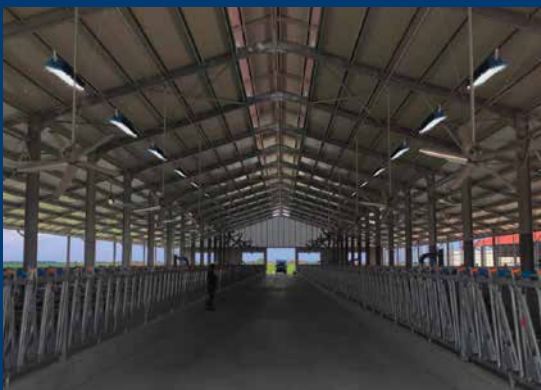
Coolibri solution

The lighting calculation predicts the behavior of the light by defining the correct position, the number of lighting corpses and optimizing the yield with the right cost.

With Coolibri led lamps we create variable intensity lighting systems with the correct color temperature, respecting high quality standards and long life.

The iBOX control unit offers maximum versatility in managing the lighting of one or more rooms, even remotely.

The Coolibri photoperiod package is complete with all sensors, necessary to a constantly monitoring the environmental conditions and make an automatic and autonomous light activity.



Thanks to the software of our creation, the respect of the light / dark rhythms emitted from the photoperiod could turn into concrete results.



The Photoperiod management, is a tool which current technology can make available to the farmer and thanks to our solutions, can improve the conditions of the farm and make the production more efficient.

NADE.COM

CLEMT-8310 2110Mx1EN



Coolibri s.r.l.
Via del Boscone 17/B
25014 Castenedolo (BS)
Tel. +39 030 27 32 062
www.coolibri.it




COOLIBRI®
COOL ITALIAN AIR

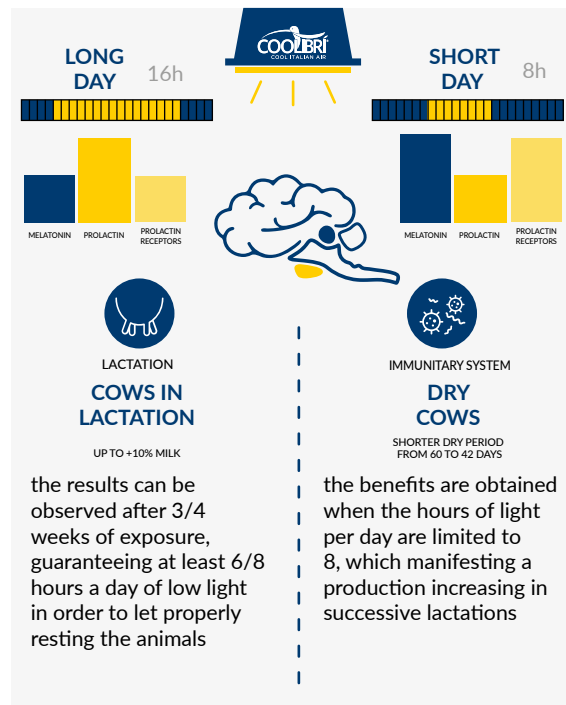


Photoperiod

What is photoperiod?

The photoperiod is the duration at the exposure of light in 24 hours.

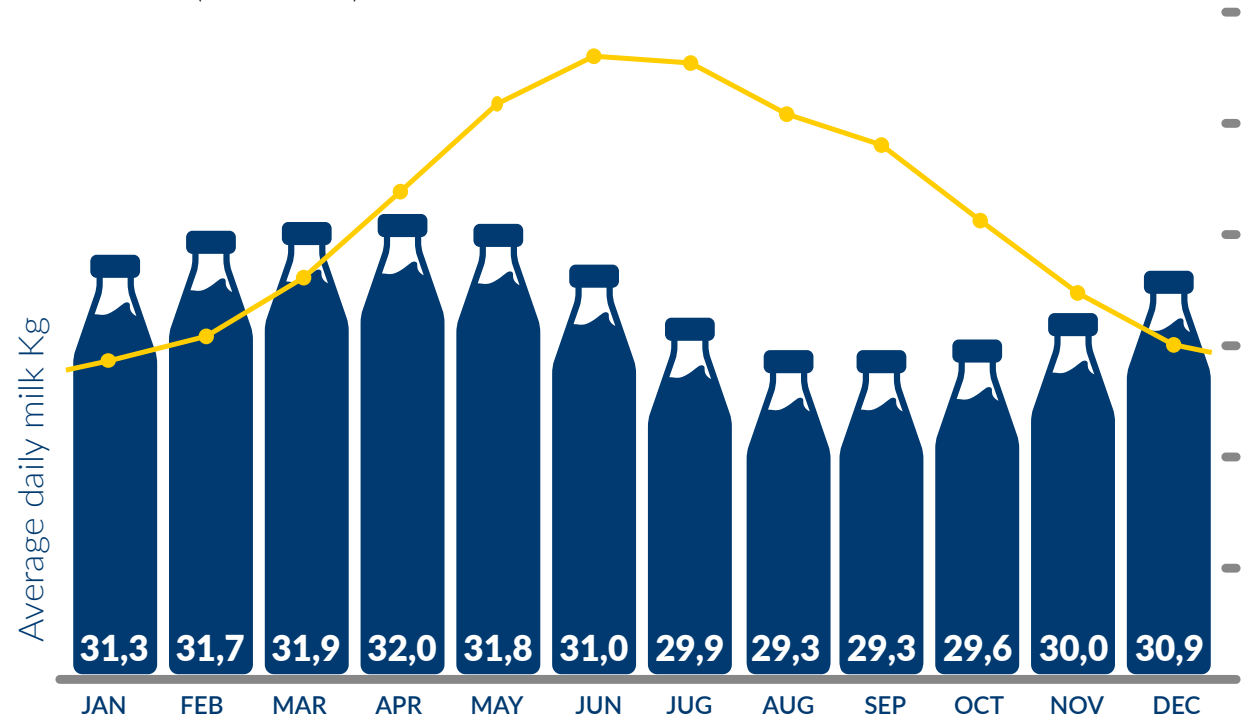
Exposure to light stimulation generated through a correct management of the photoperiod, affect the metabolic state, the biological rhythms of cattle and the secretion of specific hormones such as melatonin and prolactin, bringing benefits from various points of view, from milk production to fertility.



An intelligent lighting system should guarantee a constant and specific light intensity for 365 days a year.

Production fall down in autumn

—●— DIM (2014 - 2019)



October shows a drastic drop in production estimated at 2.4 kg less milk than in April with the same average days of lactation and with the same ambient temperatures.

Probable causes:

- the continuation of the negative effects of summer heat stress;
- a concentration of deliveries in autumn and summer;
- **the change of season with consequent reduction of daylight hours.**

The result to be achieved is the lactation increase, in order to have more possibilities for the cattle to feed over time, but above all to obtain a better fertility management distributed throughout the year, therefore by avoiding the dry cow massing in the stressful summer time and the consequent loss of production in the following lactations.