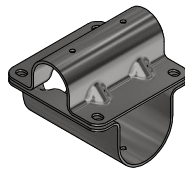


Arched Neckrail

Components

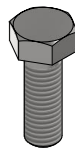


1. Arched Neckrail



2. Clamp

Fixings



A. M10x30 Bolt
(x4)
Ø17mm

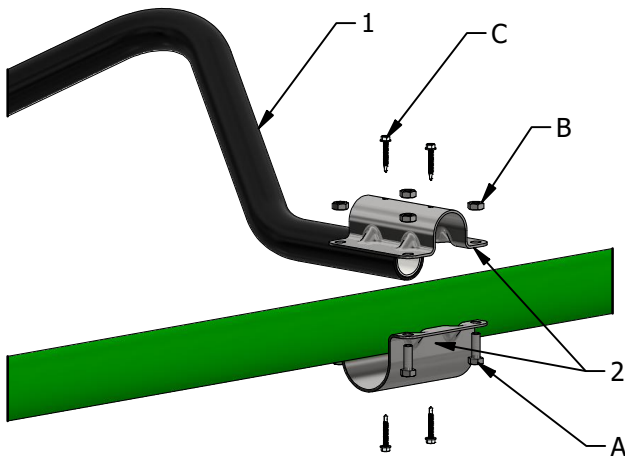


B. M10 Nut
(x4)
Ø17mm



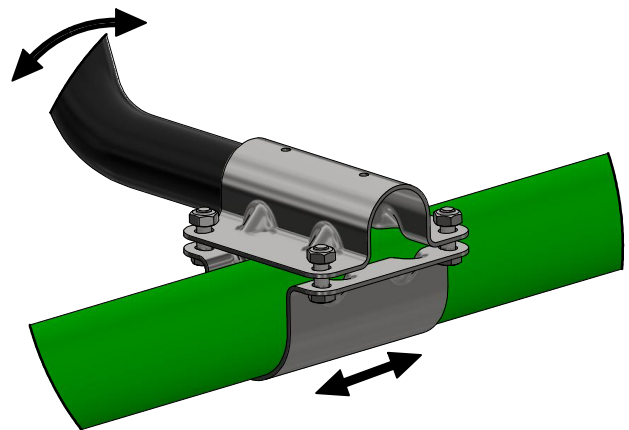
C. Tec Screw
(x4)
T25

Exploded Assembly



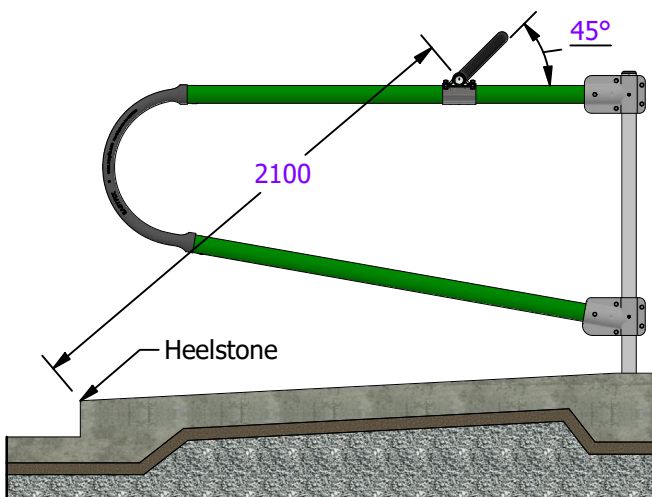
Step 1

Loosely assemble the clamps



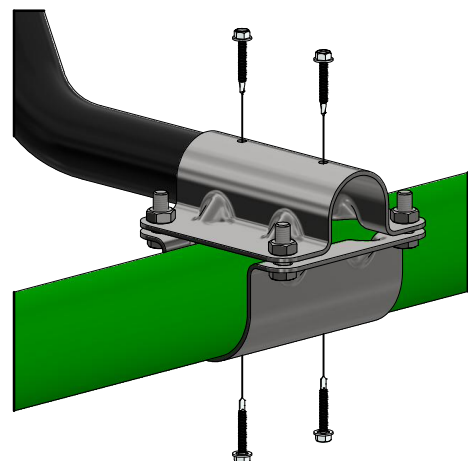
Step 2

Position the clamps & Tighten Bolts



Step 3

Coupling Tec Screws



Note:

- All bolts/fixings should be rechecked & retightened where necessary after the first 3 months of use and once yearly thereafter.
- Refer to Cubicle / Freestall Installation Manual for further instructions.